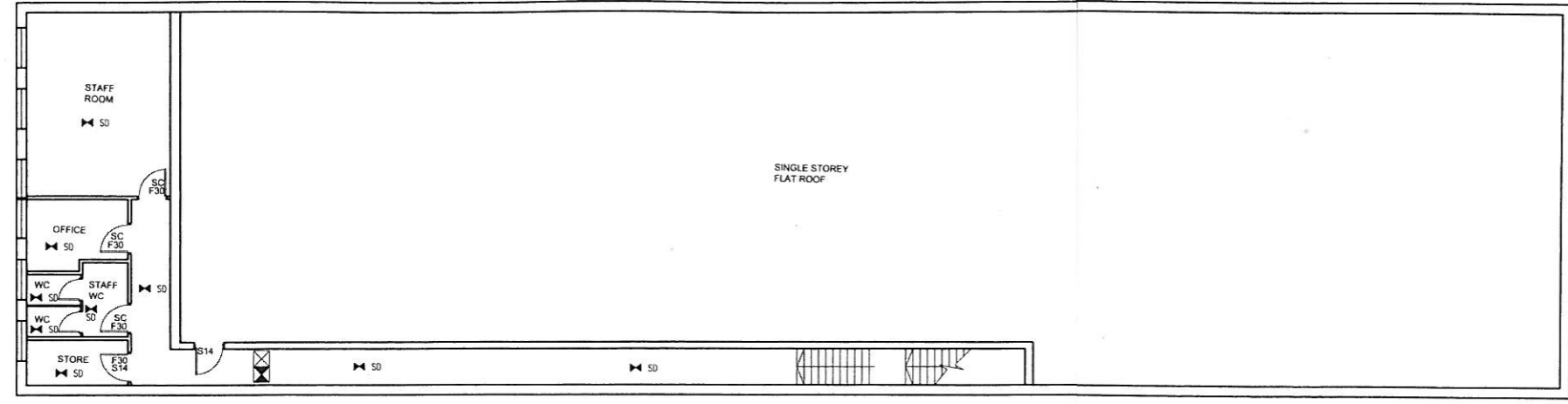


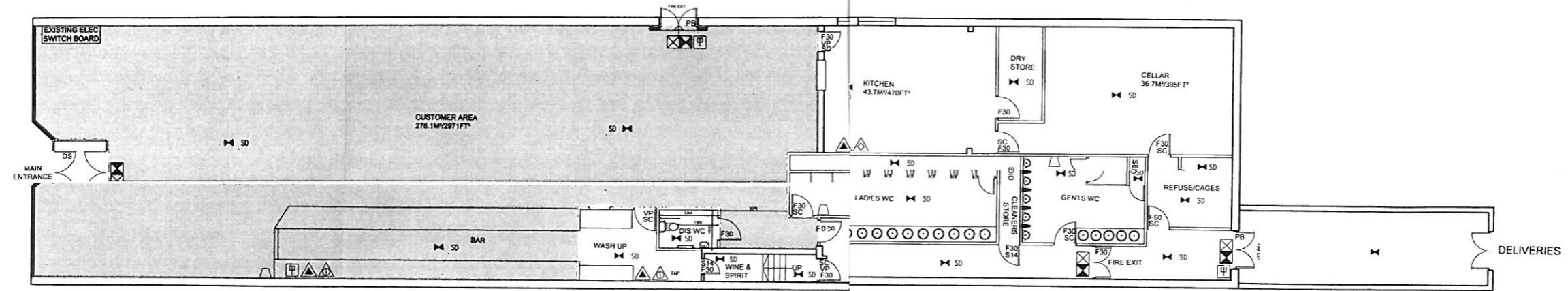
Do not scale off this drawing. All dimensions to be checked on site prior to manufacture and construction. This drawing is the property of Harrison Ince Partnership and should not be reproduced without permission. All discrepancies to be brought to the attention of the architect immediately. This drawing to be read in conjunction with the specification / bill of quantities and related drawings.

REVISIONS			
-	FIRST ISSUE	31.08.10	SC
A	AMENDED TO SHOW DOOR TO CUSTOMER TOILET CORRIDOR AND WINE & SPIRIT STORE DOOR FD30	17.09.10	SC



PROPOSED FIRST FLOOR PLAN
SCALE - 1:100

SCHEDULE OF ACCOMMODATION	
CUSTOMER AREA	- 276.1M ² /2971FT ²
KITCHEN	- 43.7M ² /470FT ²
CELLAR	- 36.7M ² /395FT ²
REFUGE	- 10.6M ² /114FT ²



PROPOSED GROUND FLOOR PLAN
SCALE - 1:100

- FIRE AUTHORITY REQUIREMENTS
- F30 HALF HOUR FIRE RESISTANT WITH SMOKE SEALS & INTUMESCENT STRIPS
 - F60 ONE HOUR FIRE RESISTANT WITH SMOKE SEALS & INTUMESCENT STRIPS
 - VP VISION PANEL
 - PB PANIC BOLT
 - SC SELF-CLOSING
 - SCA SELF-CLOSING AUTOMATIC RELEASE
 - FL FUSIBLE LINK
 - DS DOOR SELECTOR
 - S14 "FIRE DOOR KEEP LOCKED" 10mm LETTERS TO BOTH SIDES OF DOOR LEAF
 - ILLUMINATED MAINTAINED "FIRE EXIT" SIGN
 - AREA COVERED BY ESCAPE LIGHTING TO BS 5266, PART 1
 - AREA COVERED BY SMOKE DETECTORS-BS58-7
 - AREA COVERED BY HEAT DETECTORS
 - FIRE ALARM CALL POINT
 - FIRE ALARM INDICATOR PANEL
 - FIRE BLANKET IN CONTAINER
 - CARBON DIOXIDE FIRE EXTINGUISHER
 - 9 LITRE WATER EXTINGUISHER
 - DRY POWDER EXTINGUISHER
 - FOAM FIRE EXTINGUISHER
 - ALARM WARNING DEVICE (voice type in Customer areas)
 - music sound system to be de-activated

KEY
AREA FOR SALE OF ALCOHOL, PROVISION OF LATE NIGHT REFRESHMENT AND REGULATED ENTERTAINMENT.

GENERAL NOTES

GENERAL
ALL WALLS AND CEILING FINISHES IN CIRCULATION AREAS TO COMPLY WITH CLASS O SPREAD OF FLAME CHARACTERISTICS. ALL WALLS AND CEILING FINISHES TO PUBLIC AREAS TO HAVE CLASS 1 SPREAD OF FLAME CHARACTERISTICS IN ACCORDANCE WITH BS 476 PART 7:1971.

DOOR TYPES
FD - NEW HALF HOUR 30/30 FIRE DOOR, SELF CLOSING WITH 30/30 FRAME. ALL FIRE DOORS TO BE FITTED WITH INTUMESCENT / SMOKE SEALS. ALL LOCKABLE DOORS TO HAVE INTERNAL THUMBURNS.
EXTERNAL FIRE EXIT DOORS TO BE FITTED WITH PANIC BOLTS. ANY LOW LEVEL GLAZING IN DOORS TO BE FITTED WITH SAFETY GLASS IN ACCORDANCE WITH BS5206.
PB - EXTERNAL DOOR ON FRAME WITH PANIC BOLT.
VP - ALL DOORS INDICATED TO HAVE A LOW LEVEL GEORGIAN WIRED VISION PANEL (GLASS TO BE SET IN INTUMESCENT PASTE WITH HARDWOOD BEADING).

ALL NEW UPHOLSTERY COVERINGS TO BE BS 5852 PART 1: 1989 OF BS 5852 PART 2 WITH IGNITION RESISTANCE REQUIREMENTS OF BS 7176 OR DOE PSAFR3 SPECIFICATION AS APPROPRIATE. FURNITURE TO CONFORM TO BS 7176 AND TO CARRY LABEL STATING TO WHICH HAZARD CATEGORY THEY COMPLY.
CURTAINS, DRAPES AND OTHER DECORATIVE MATERIALS TO BE INHERENTLY NON-FLAMMABLE OR DURABLY FLAME PROOFED AND TO CONFORM WITH BS 5867 PART 2 FABRIC TYPE B.
TEXTILE FLOOR COVERINGS TO BE TESTED TO BS 4750 1987 (DETERMINATION OF FLAMMABILITY - HOT METAL NUT TEST) TO HAVE A LOW RADIUS OF EFFECTS OF IGNITION (35MM).
ARTIFICIAL FOLIAGE TO BE INHERENTLY FLAME RETARDANT OR TREATED WITH A FIRE RETARDANT SOLUTION AND TO BE BEDDED IN NON-COMBUSTIBLE MATERIALS TO BS 5852 PART 1. PFA GRANULES OR SIMILAR MATERIALS (CERTIFICATE TO BE PROVIDED BY CONTRACTOR).

FIRE ALARM SYSTEM
THE PROPOSED FIRE ALARM TO COMPLY WITH BS 5839 PART 1: 1988.

EMERGENCY LIGHTING
THE SYSTEM TO COMPLY WITH BS 5266 AND INCORPORATE ADEQUATE ILLUMINATION OF ALL EXTERNAL STEPS WHICH SERVE EXIT DOORS.

FIRE STOPPING
FIRE STOPPING TO BE INSERTED INTO CEILING AS REQUIRED TO CREATE PROTECTED STAIRS LOBBIES, CORRIDORS, ETC.
ALL VENTILATION DUCTS, PIPES ETC PASSING THROUGH COMPARTMENT FLOORS AND WALLS TO BE PROTECTED BY QUEL FIRE FIRE COLLARS.

NOTICES
NOTICES WITH THE WORDS "PUSH BAR TO OPEN" TO BE DISPLAYED ON ALL FITTED WITH PANIC BOLTS OR PANIC LATCHES.
ALL FIRE RESISTING SELF CLOSING DOORS ARE TO BE PERMANENTLY MAINTAINED AT EYE LEVEL WITH A BLUE CIRCULAR NOTICE BEARING THE WORDS "FIRE" IN WHICH LETTERS ARE TO BE NOT LESS THAN 5MM IN HEIGHT.

DRAINAGE
SANITARY PIPE WORK IS TO COMPLY WITH PROVISION OF BS 5572:1978. TO COMPLY WITH THE PROVISION OF BS 8301:1985 AND IS TO BE LAID IN ACCORDANCE WITH THE DRAINAGE DRAWINGS. SINK WASTE TO BE 38MM DIAMETER AND FITTED WITH AN ANTI-VAC TRAP. COMBINED WASTES TO BE 50MM WC AND SOIL PIPE WITH SVP TERMINATING 900MM ABOVE EAVES LINE (DRAINS LAID TO FALL TO DRAINAGE IS TO COMPLY WITH THE PROVISIONS OF BS 8367:1983 AND BS 8101:1987 TO FALL INTO BACK INLET GULLEYS. ALL PIPE WORK PASSING UNDER LESS THAN 600MM BELOW GROUND LEVEL TO BE SURROUNDED IN 150MM CONCRETE PIPE WORK PASSING THROUGH THE EXTERNAL WALLS TO HAVE CONCRETE TO INTERNAL MANHOLES TO BE CONSTRUCTED WITH 215MM SOLID ENGINEERED TO BS3921 WITH REMOVABLE NON-VENTILATED STEEL COVERS WITH 150MM C/C THE BENCHING. ALL TO ENGINEERS ADVICE/DETAILS.

DISABLED TOILET
DISABLED TOILET TO COMPLY WITH PART M BUILDING REGULATIONS.

VENTILATION
TOILETS, BATHROOMS AND KITCHENS TO HAVE MECHANICAL VENTILATION CAPABLE OF EXTRACTING AIR AT A RATE OF NOT LESS THAN 3 AIR CHANGES PER HOUR WITH 15 MINUTE OVER-RUN LINKED TO LIGHT SWITCH. ALL TO M & E CONSULTANTS DETAILS/CALCULATIONS.

STAIRS, STEPS AND GUARDINGS
TO COMPLY WITH PART M AND K. BALUSTRADING TO BE CAPABLE OF RESISTING A FORCE OF 0.74KN/M. TO ENGINEERS DETAIL/ADVICE.

GLAZING
ALL GLAZING BELOW 800MM TO BE LAMINATED. ALL GLAZING TO DOORS BELOW 1500MM TO BE LAMINATED GLASS TO COMPLY WITH PART L2 PROVIDE MANIFESTATION AS NECESSARY.

REFER TO M&E DRAWINGS FOR DRAINAGE & BUILDERS WORK REQ'S FOR DI
REFER TO BACK OF HOUSE DATA SHEETS FOR DETAILS, FITTINGS AND FIN
REFER TO FRONT OF HOUSE DATA SHEETS FOR DETAILS, FITTINGS AND FIN

HARRISON INCE	ARCHITECTS INTERIOR DESIGNERS
JD WETHERSPOON PLC	
client	FORMER WOOLWORTHS, 87 MAIN ST. PRESTWICK, KA9 1JX - PN6319
project	LICENSING PLAN
title	
date	AUGUST 2010
scale	1:100 @ A1
job no	JD271
draw no	AM01 / A
drawn	CAD/SC
checked	

2, Jersey Street, Exeter, Devon, EX1 1JX
Tel: 01392 236 300
Fax: 01392 236 301
www.harrisonince.co.uk